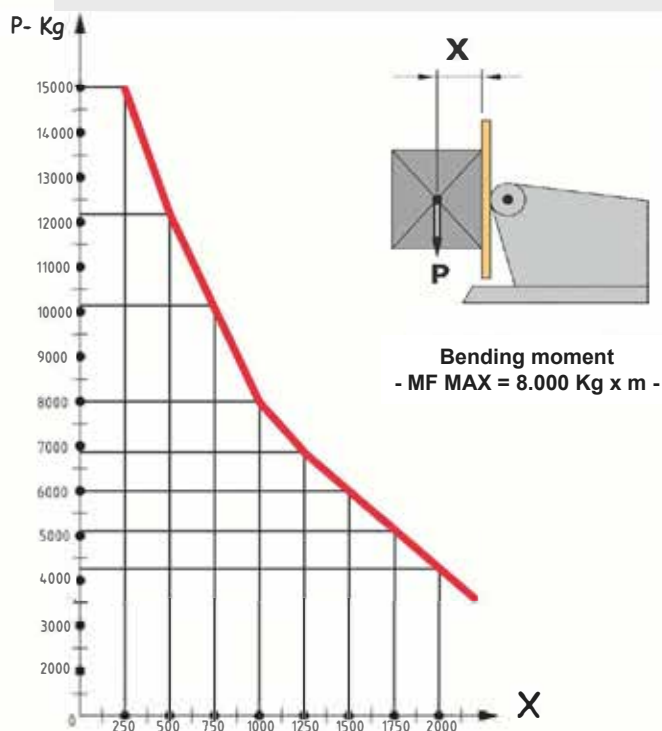
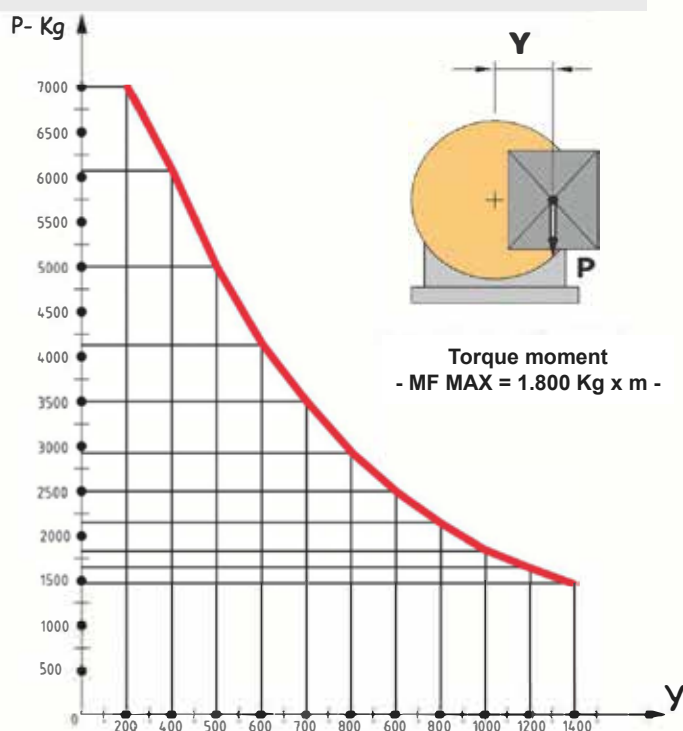


Max capacity with horizontal table:	15.000 Kg
Max capacity in all positions - 0°/120°:	8.000 Kg
Max Torque moment:	1.800 Kg/m
Max Bending moment:	8.000 Kg/m
Table speed rotation:	0,15 - 0,5 RPM
Table tilt:	0° - 105 °
Machine Weight:	4.600 Kg
Supply voltage:	380V 50Hz 3f
Installed power:	6,0 Kw
Mass welding:	1.500 A



X - Distance of the part from the table plane (mm)



Y - Distance of the part from the rotation axis table (mm):